



SUIT CUSTOMIZATION TUTOR



PALETTE 1 PRINTABLE AREA - FOLLOW THE STEPS

3 LAYERS - 295 gr/m²

CREATE YOUR SPECIAL



IA01857

FIA HOMOLOGATED



GREY AREA



CYAN AREA:

CHOOSE THE COLOUR FROM PALETTE 2



PINK AREA:

CHOOSE THE COLOUR FROM PALETTE 3

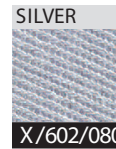
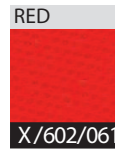
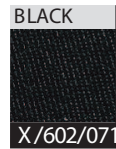
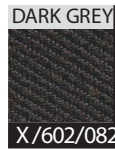


YELLOW AREA:

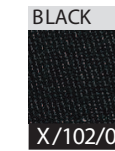
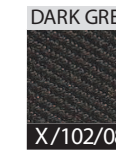
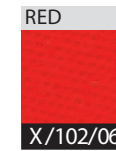
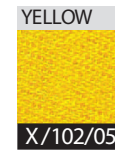
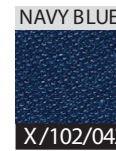
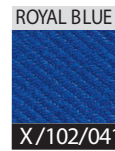
CHOOSE THE COLOUR FROM PALETTE 4



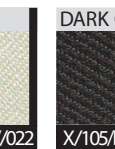
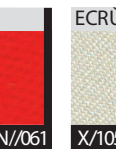
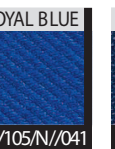
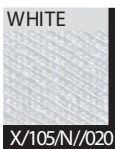
PALETTE 2 STRETCH DRY SYSTEM FABRIC



PALETTE 3 INTERLOCK FABRIC



PALETTE 4 WRIST AND ANKLE CUFFS FABRIC



This model of suit can be customized through the use of images, photos and color blendings. This peculiar feature is possible thanks to our proprietary technology "OMP Printart". The customizable area is shown in grey in the picture.

The printing on the fabric will be done in CMYK mode (CMYK is the acronym for Cyan, Magenta, Yellow and black). This mode, also called "four color process", is the same used by common printers, and the colour rendering will be included in this range.

Please note that the CYMK system can't faithfully reproduce fluo colours, or the "brilliant" shades shown by computer screens. The latter are reproduced through the RGB system, which is completely different.

For the best result, please follow scrupulously the following instructions.

1) All logos must be forwarded in vectorial format (.ai/.eps/.cdr/.pdf); also the texts, if present, must be included in the file and converted in curves.

2) In the event that the customer requested a particular color from the Pantone range, the exact code must be specified (find it here: www.pantone.co.uk/pages/pantone/colorfinder.aspx).

3) The format of photos or digital images must be one of the following: .jpg/.tiff/.psd/.eps, in CYMK mode.

4) For dimensions and resolutions of photos or images follow this table:

- Dimension: circa 30x25 cm - Resolution: 300 dpi
- Dimension: circa 50x35 cm - Resolution: 200 dpi
- Dimension: circa 80x55 cm - Resolution: 100 dpi

*indicative values